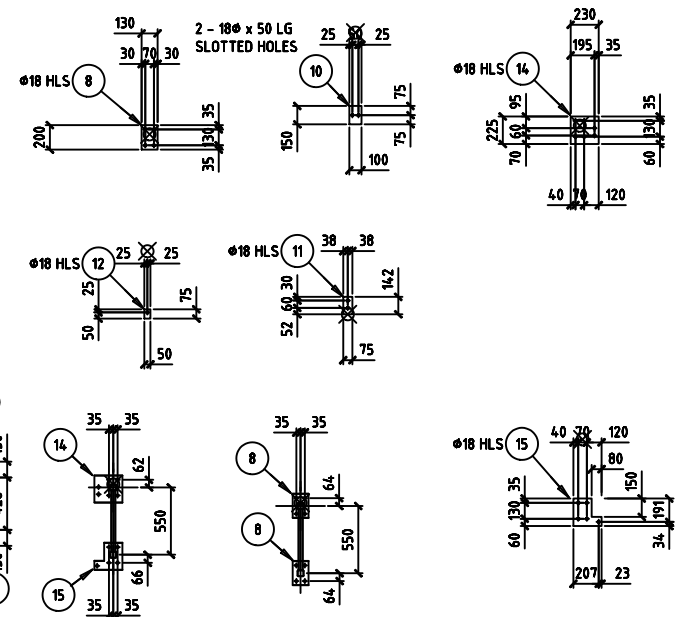
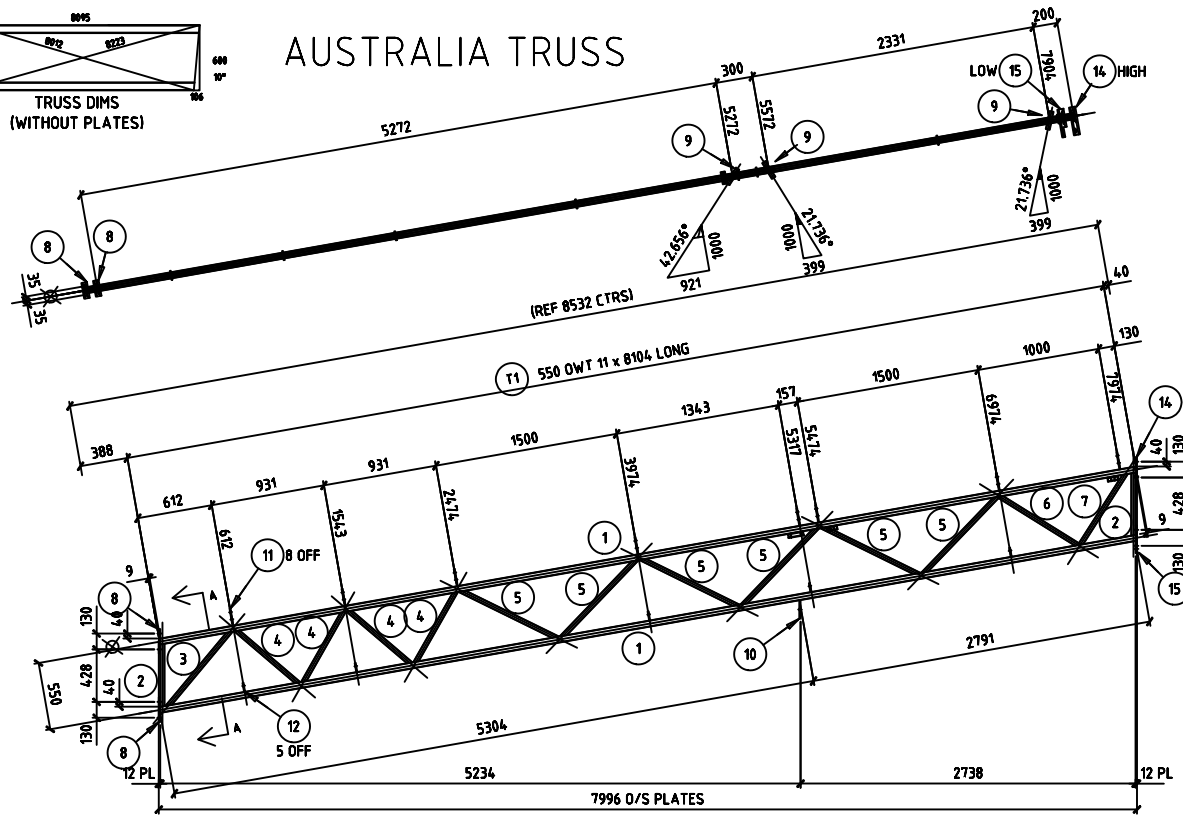
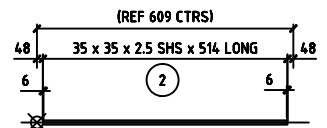


AUSTRALIA TRUSS

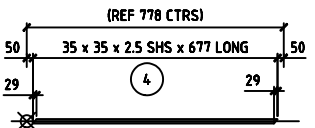


SECTION A-A

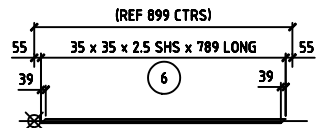
1 - TRUSS MK T1
Mass: 169 Kg Each



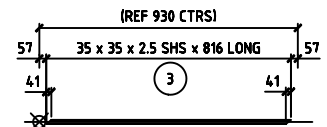
ITEM 2



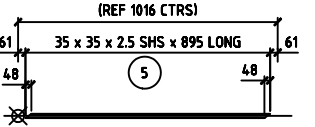
ITEM 4



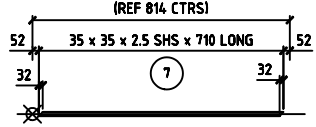
ITEM 6



ITEM 3



ITEM 5



ITEM 7

Total Mass = 87.50 Kg.

ITEM	QTY	DESCRIPTION	LENGTH	DIA	MASS	MBR MASS
7	1	35 x 35 x 2.5 SHS	710		1.72	
6	1	35 x 35 x 2.5 SHS	789		1.91	
5	6	35 x 35 x 2.5 SHS	895		13.00	
4	4	35 x 35 x 2.5 SHS	677		6.56	
3	1	35 x 35 x 2.5 SHS	816		1.98	
2	2	35 x 35 x 2.5 SHS	514		2.50	
1	2	50 x 50 x 2.5 SHS	8104		58.36	
15	1	225 X 12 PLATE	230	18		
14	1	225 X 12 PLATE	230	18		
12	5	50 X 8 FLAT	75	18		
11	8	75 X 8 PLATE	142	18		
10	1	100 X 10 FLAT	150	18		
9	3	34 DIA CHS 4.5	150		1.47	
8	2	130 X 12 FLAT	200	18		

PLEASE READ GENERAL NOTES BELOW PRIOR TO COMMENCEMENT.
 1. HOLES 22 DIA FOR MEDIUM B BOLTS U/L/D.
 2. MINIMUM EDGE DISTANCE = 30mm U/L/D.
 3. ALL STRUCTURAL STEEL SHALL BE IN ACCORDANCE WITH AS 1210. GRADE 300; HOT ROLLED PLATES. GRADE 300; L/S, I/S, P/C, S/S, U/S, V/S & T/C. GRADE 300; H/S & S/S.
 4. ALL WELDING AND WELD PREPARATION SHALL BE TO AS 1554 PART 1 & PART 8 (WELD CATEGORY SP U/L/D).
 5. ALL WELDS TO BEW ONE FULLY BEHELD U/L/D.
 6. ALL BUTT WELDS TO BE FULL PENETRATION U/L/D.

PROPOSED ADDITIONS TO LIGHT INDUSTRIAL DEVELOPMENT AT RACECOURSE ROAD, RUTHERFORD

REV.	AMENDMENT DESCRIPTION	DATE
A	ISSUED FOR APPROVAL	

DATE:	
SCALE:	1:25
DSN:	BV CHK: DJB
DWG:	0315-001
REV.:	A

TRUSS T1